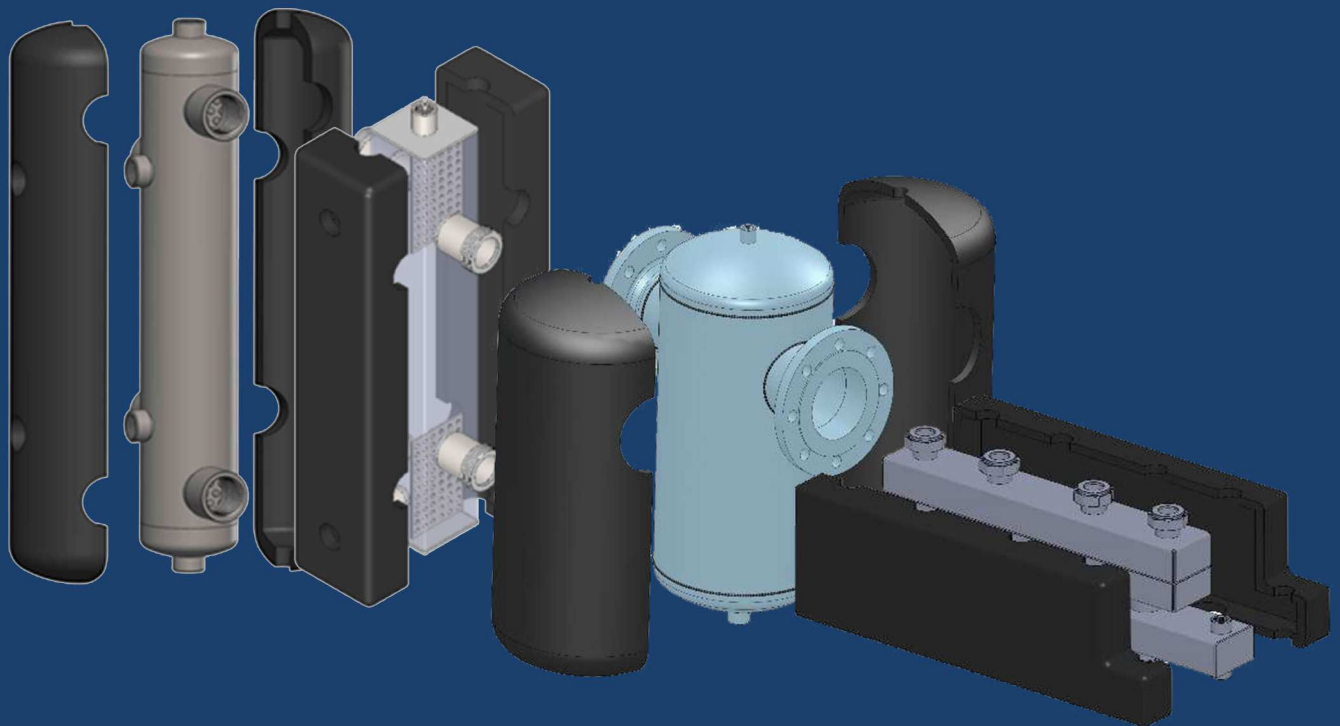




Hydraulic Separators, Manifolds and Components for Heating Systems

Made in Italy



HYDRAULIC SEPARATOR WITH INTEGRATED DISTRIBUTION MANIFOLD - VARNISHED STEEL

Smart are packaged singular in a carton box with insulation.

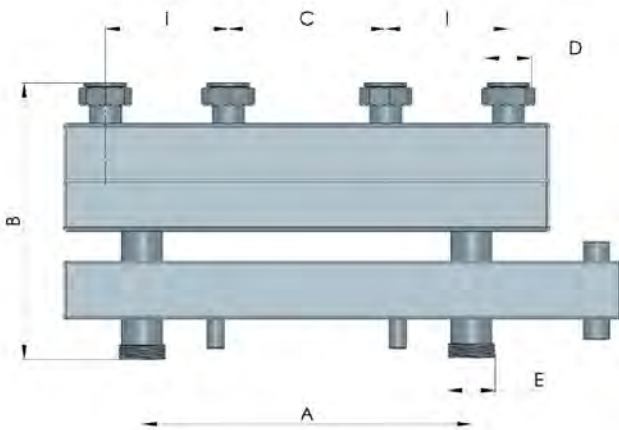
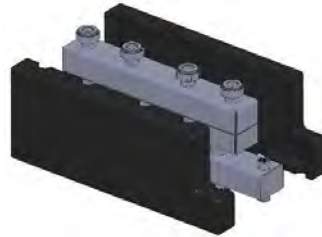
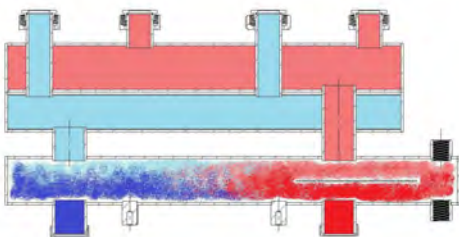
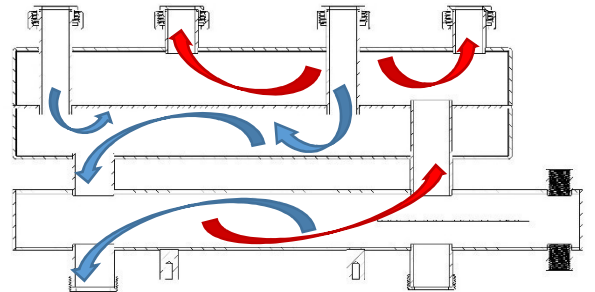
Temperature range 0÷100°C.

Max working pressure 10 Bar.

Air vent connection 1/2", discharge connection 1/2",
Breaking flow grid to separate air and dust from water.

Insulation removable, in PPE foamed polyurethane rigid closed-cell.

Thickness 15mm, maximum temperature before softening 90°C



CODE	SIZE OF CONNECTIONS D	SIZE OF CONNECTIONS E	SIZE A	SIZE B	SIZE I	SIZE C	MAX FLOW m ³ /h (±0.5)	WEIGHT Kg	VOLUME Liter
6900	4 x G 1"1/2 Female	G 1"1/2 Male	335 mm	291 mm	125 mm	160 mm	4.6 m ³ /h	11.50	2.8
6901	6 x G 1"1/2 Female	G 2" Male	620 mm	291 mm	125 mm	160 mm	6.3 m ³ /h	16.50	4.2
6902	8 x G 1"1/2 Female	G 2" Male	825 mm	291 mm	125 mm	160 mm	10 m ³ /h	22.00	5.6

DISTRIBUTION MANIFOLDS SQUARE TUBE VARNISH STEEL

Distribution manifolds are packaged singular in a carton box with insulation.

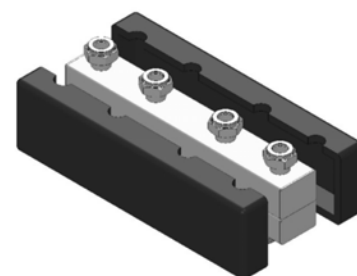
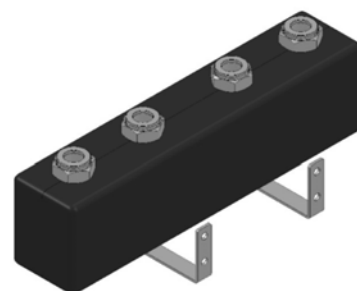
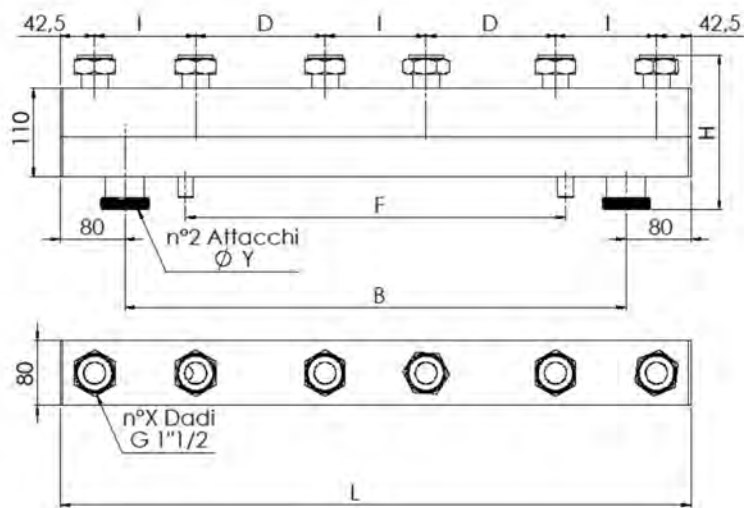
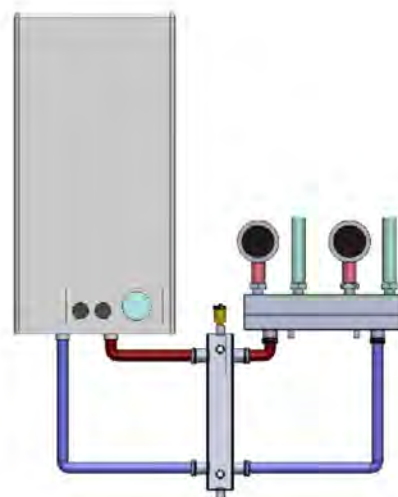
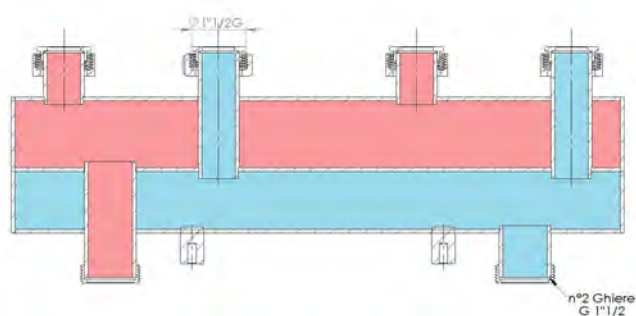
Temperature range 0÷100°C.

Max working pressure 10 Bar.

Insulation removable, in PPE foamed polyurethane rigid closed-cell.

Thickness 15mm, maximum temperature before softening 90°C.

With bracket to fix on the wall.



CODE	SIZE OF CONNECTIONS Y	DISTANCE H (mm)	DISTANCE I (mm)	DISTANCE D (mm)	LENGTH L (mm)	MAX FLOW (±0.5)	WEIGHT Kg	VOLUME Liter
6920	G 1 1/2 Male	200	125 X2 GROUPS	160	495	4.6	6.8	2.2X2
6921	G 2" Female	200	125 X3 GROUPS	160	780	6.2	10.4	3.5X2
6922	G 2" Female	200	125 X4 GROUPS	160	1065	10.3	13.8	4.7X2

HYDRAULIC SEPARATOR SQUARE TUBE VARNISH STEEL

Hydraulic separators are packaged singular in a carton box with insulation.

Temperature range 0÷100°C.

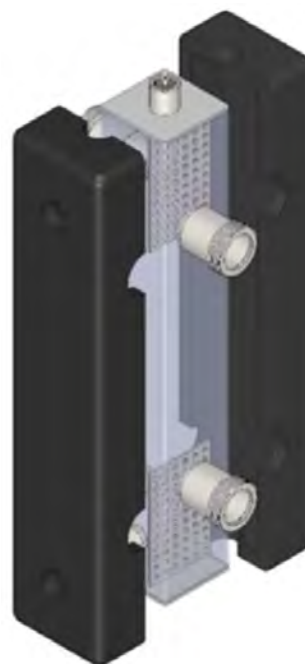
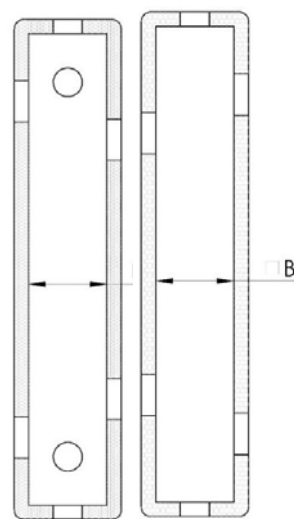
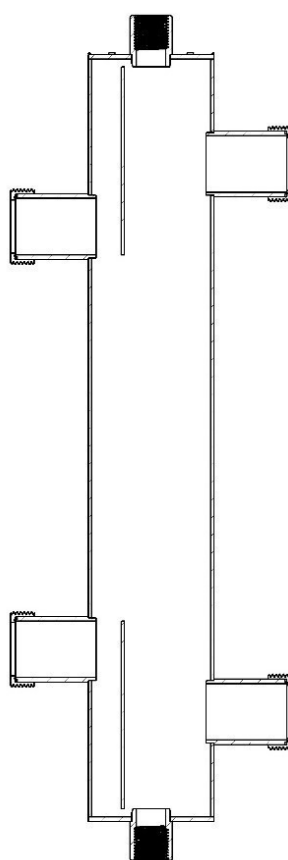
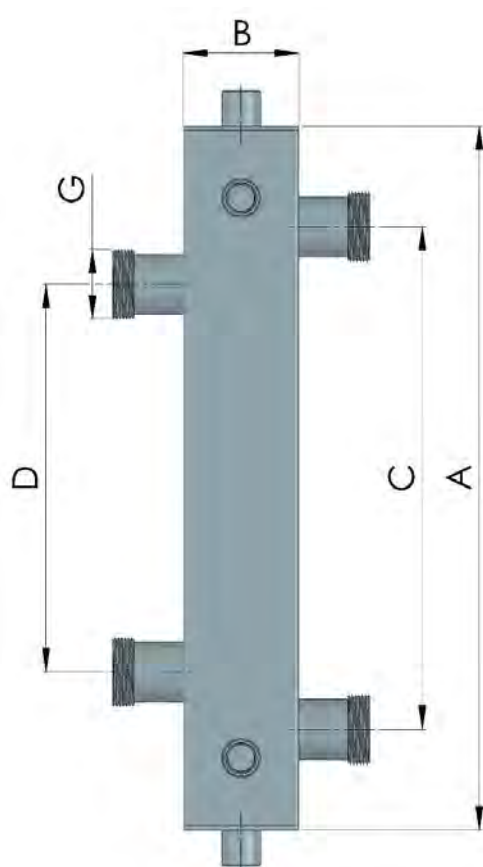
Max working pressure 10 Bar.

Air vent connection 1/2", discharge connection 1/2",

Breaking flow grid to separate air and dust from water.

Insulation removable, in PPE foamed polyurethane rigid closed-cell.

Thickness 15mm, maximum temperature before softening 90°C



CODE	SIZE OF CONNECTIONS G	SIZE OF MAIN TUBE B	DISTANCE LEFT SIDE D	DISTANCE RIGHT SIDE C	LENGTH A	MAX FLOW (±0.5) m³/h	WEIGHT Kg	VOLUME Liter
6910	G 1"1/2 Male	80X80 mm	270 mm	390 mm	490 mm	4.1 m³/h	3.50	2.7
6911	G 2" Male	100X100 mm	430 mm	550 mm	650 mm	6.2 m³/h	7.50	5.7
6912	G 2" Female	120X120 mm	580 mm	700 mm	800 mm	9.6 m³/h	11.30	10.3

HYDRAULIC SEPARATOR ROUND TUBE ZINC PLATED STEEL

Hydraulic separators are packaged singular in a carton box with insulation.

Temperature range 0÷100°C.

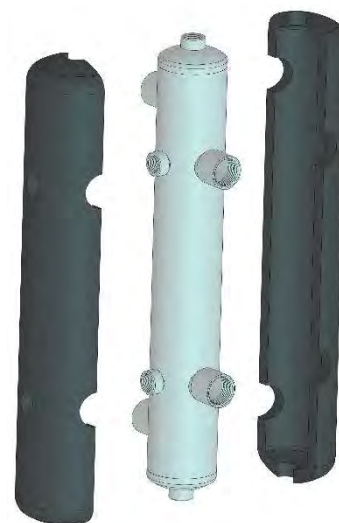
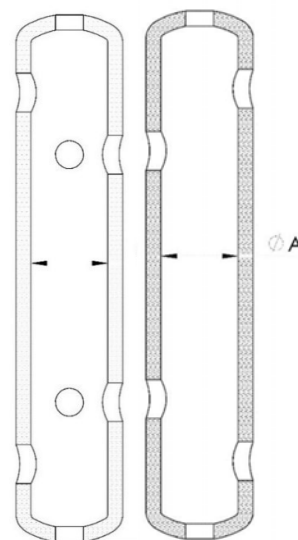
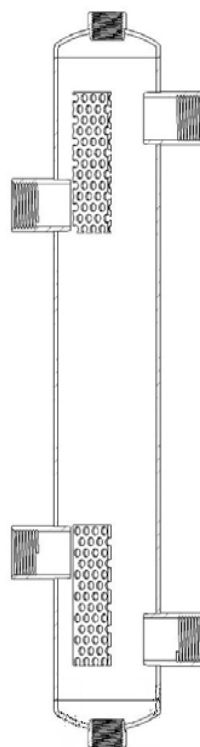
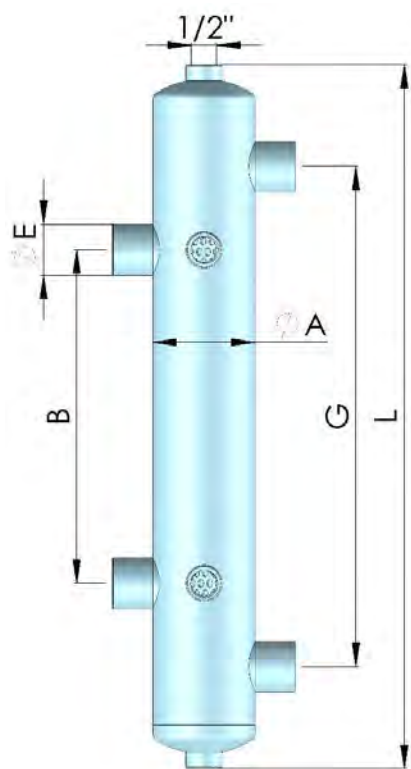
Max working pressure 10 Bar.

Air vent connection 1/2", discharge connection 1/2",

Breaking flow grid to separate air and dust from water.

Insulation removable, in PPE foamed polyurethane rigid closed-cell.

Thickness 15mm, maximum temperature before softening 90°C



CODE	SIZE OF CONNECTIONS E	SIZE OF MAIN TUBE A	DISTANCE LEFT SIDE B	DISTANCE RIGHT SIDE G	LENGTH L	MAX FLOW (±0.5) m³/h	WEIGHT Kg	VOLUME Liter
6913D	G 3/4" Female	60.3 mm	228 mm	322 mm	470 mm	2.6 m³/h	2.5	1.2
6913	G 1" Female	76.1 mm	248 mm	372 mm	524 mm	4.0 m³/h	3	2.3
6913A	G 1 1/4" Female	88.9 mm	308 mm	432 mm	654 mm	6.0 m³/h	4	4
6913B	G 1 1/2" Female	114.3 mm	368 mm	492 mm	774 mm	7.8 m³/h	6	7.5
6913C	G 2" Female	139.7 mm	428 mm	552 mm	894 mm	12.3 m³/h	8	13

HYDRAULIC SEPARATOR ROUND TUBE ZINC PLATED STEEL - SERIE M

Hydraulic separators are packaged singular in a carton box with insulation.

Temperature range 0÷100°C.

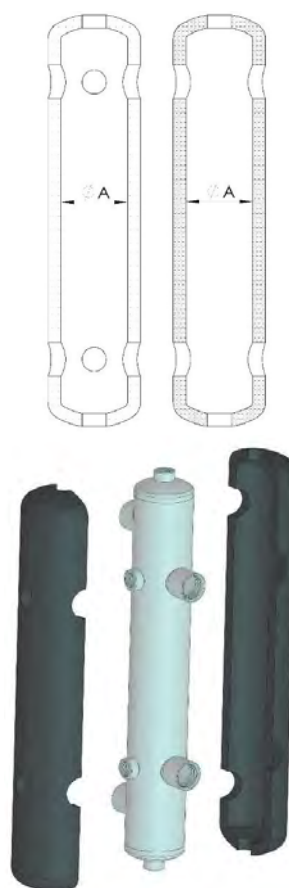
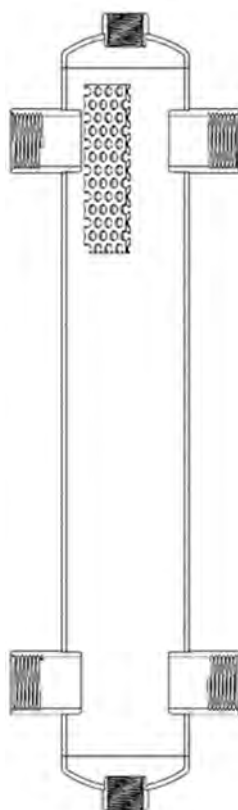
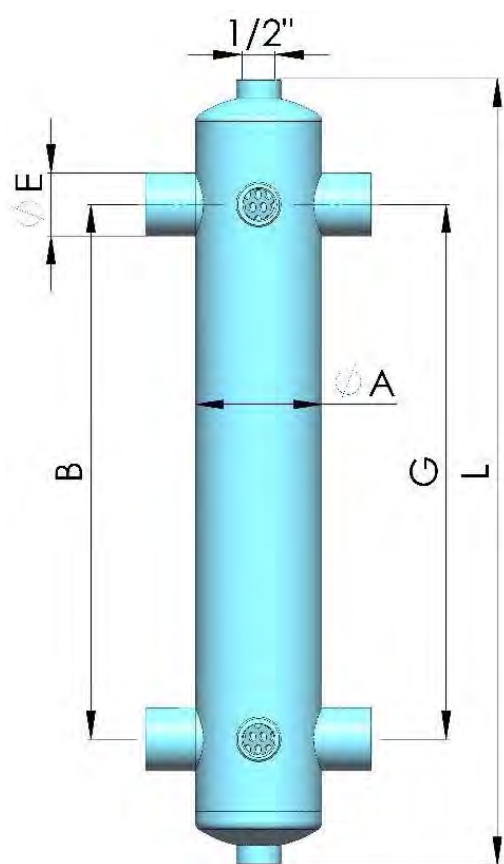
Max working pressure 10 Bar.

Air vent connection 1/2", discharge connection 1/2",

Breaking flow grid to separate air and dust from water.

Insulation removable, in PPE foamed polyurethane rigid closed-cell.

Thickness 15mm, maximum temperature before softening 90°C



CODE	SIZE OF CONNECTIONS E	SIZE OF MAIN TUBE A	DISTANCE B&G	LENGTH L	MAX FLOW (±0.5)	WEIGHT Kg	VOLUME Liter
6913MD	G 3/4" Female	60.3 mm	272 mm	424 mm	2.6 m³/h	1.8	1.1
6913M	G 1" Female	76.1 mm	322 mm	474 mm	4.0 m³/h	2.5	2
6913MA	G 1 1/4" Female	88.9 mm	372 mm	524 mm	6.0 m³/h	3.5	3.1
6913MB	G 1 1/2" Female	114.3 mm	422 mm	574 mm	7.8 m³/h	5.5	5.6
6913MC	G 2" Female	139.7 mm	472 mm	624 mm	12.3 m³/h	7.5	9.2

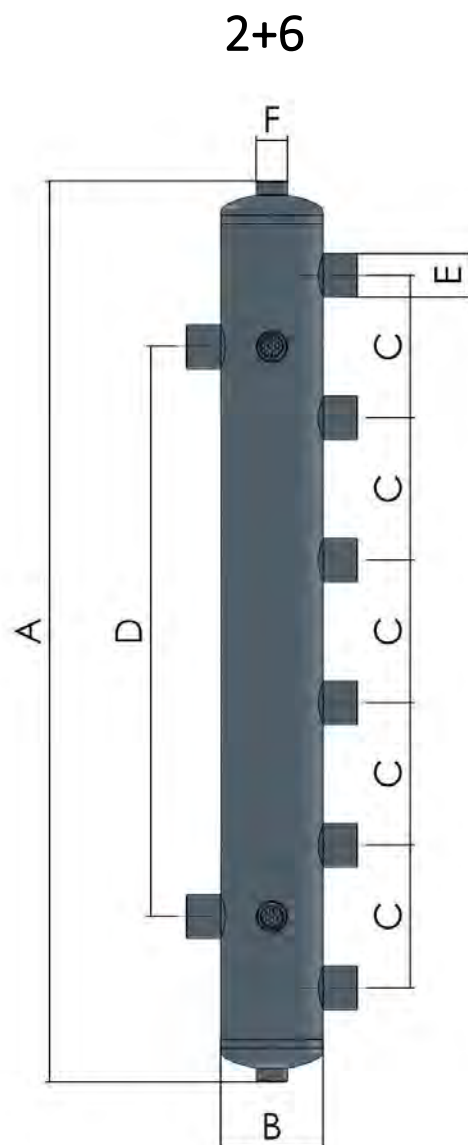
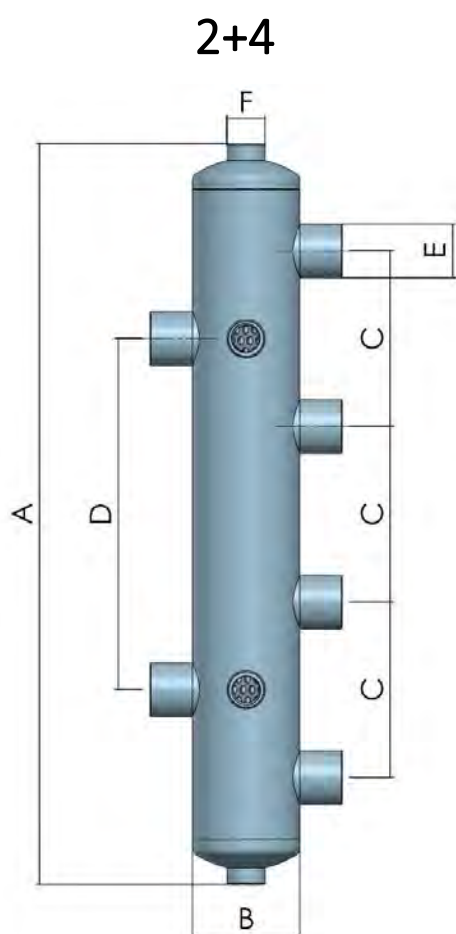
HYDRAULIC SEPARATOR ROUND TUBE ZINC PLATED STEEL

Hydraulic separators are packaged in a carton box.

Temperature range 0÷100°C.

Max working pressure 10 Bar.

Air vent connection ½", discharge connection ½".



CODE	SIZE OF CONNECTIONS E	SIZE OF MAIN TUBE B	DISTANCE D	DISTANCE C	LENGTH A	MAX FLOW (±0.5)	WEIGHT Kg	VOLUME Liter
6914	2+4 G 1" Female	76.1 mm	248 mm	124 mm	524 mm	4.0 m ³ /h	3.5	2.5
6915	2+6 G 1" Female	76.1 mm	268 mm	124 mm	772 mm	4.0 m ³ /h	5.2	4.0

HYDRAULIC SEPARATOR ROUND TUBE INOX 304

Hydraulic separators are packaged singular in a carton box with insulation.

Temperature range 0÷100°C.

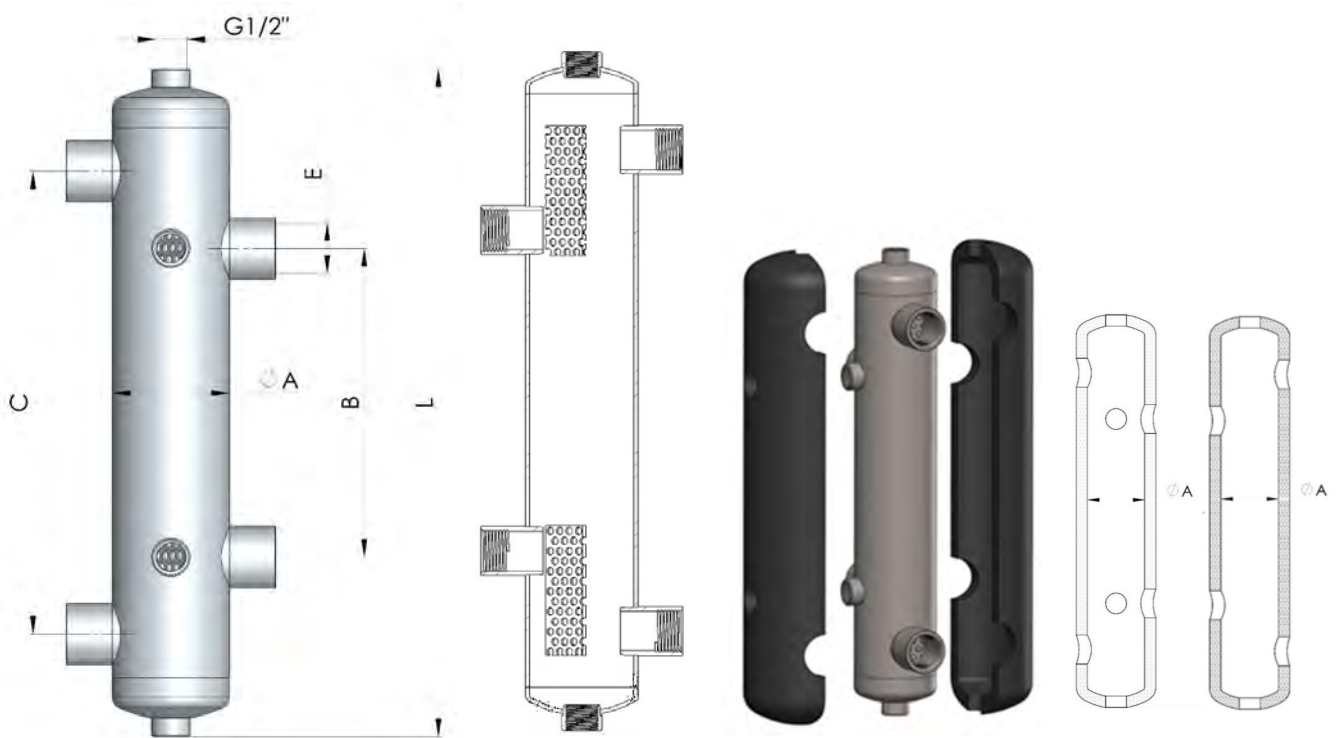
Max working pressure 10 Bar.

Air vent connection ½", discharge connection ½",

Breaking flow grid to separate air and dust from water.

Insulation removable, in PPE foamed polyurethane rigid closed-cell.

Thickness 15mm, maximum temperature before softening 90°C



CODE	SIZE OF CONNECTIONS E	SIZE OF MAIN TUBE A	DISTANCE LEFT SIDE B	DISTANCE RIGHT SIDE C	LENGTH L	MAX FLOW (±0.5) m³/h	WEIGHT Kg	VOLUME Liter
6950X	G 1" Female	76.1 mm	200 mm	300 mm	432 mm	4.0 m³/h	2.8	2.0
6951X	G 1"1/4 Female	88.9 mm	250 mm	350 mm	499 mm	6.0 m³/h	4.0	3.0
6952X	G 1"1/2 Female	114.3 mm	300 mm	400 mm	565 mm	7.8 m³/h	6.0	5.6

HYDRAULIC SEPARATOR ROUND TUBE ZINC PLATED STEEL - BIG SERIES FLANGED

Hydraulic separators are packaged singular in a carton box with ins Temperature range 0÷100°C.

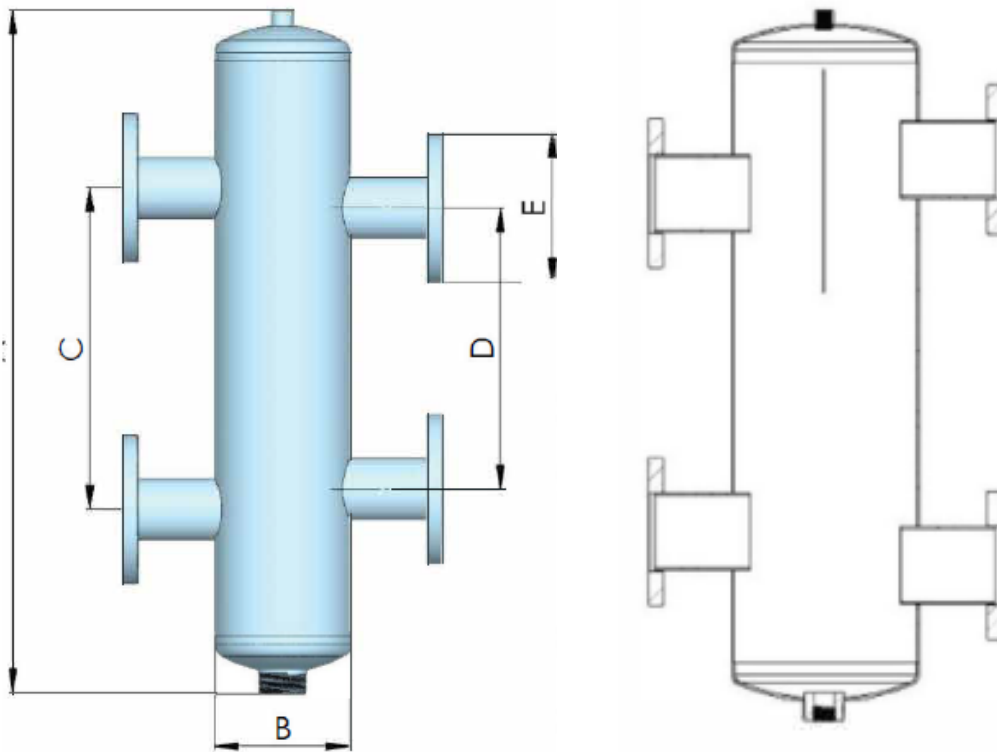
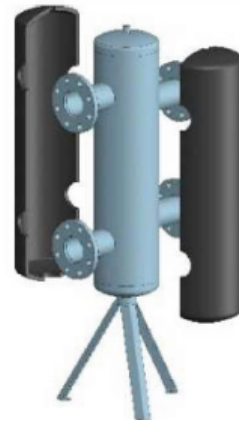
Max working pressure 10 Bar.

Air vent connection ½", discharge connection ½",

Breaking flow grid to separate air and dust from water.

Insulation removable, in PPE foamed polyurethane rigid closed-cell

Thickness 15mm, maximum temperature before softening 90°C



CODE	SIZE OF CONNECTIONS E	SIZE OF MAIN TUBE B	DISTANCE LEFT SIDE D	DISTANCE RIGHT SIDE C	LENGTH A	MAX FLOW (±0.5) m³/h	WEIGHT Kg	VOLUME Liter
6930	DN65	168mm	350mm	400mm	850mm	20	25	18
6931	DN80	219mm	400mm	500mm	950mm	25	35	34
6932	DN100	273mm	500mm	600mm	1050mm	40	40	60
6933	DN125	273mm	600mm	750mm	1200mm	65	55	68
6934	DN125	324mm	750mm	900mm	1350mm	65	70	110
6935	DN150	355mm	850mm	1000mm	1450mm	95	95	140

AIR AND DIRT SEPARATORS VERNISHED STEEL - BIG SERIE FLANGED

Air and dirt separators are packaged singular in a carton box with insulation.

Temperature range 0÷100°C.

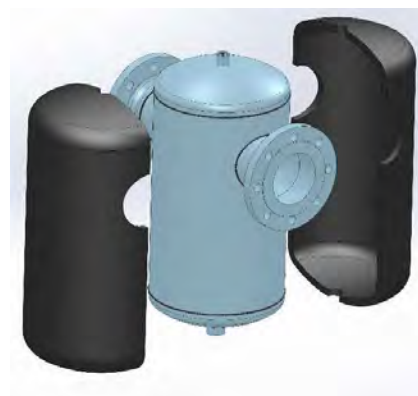
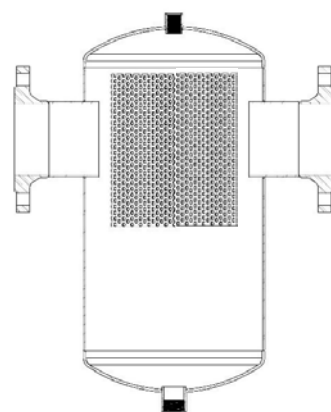
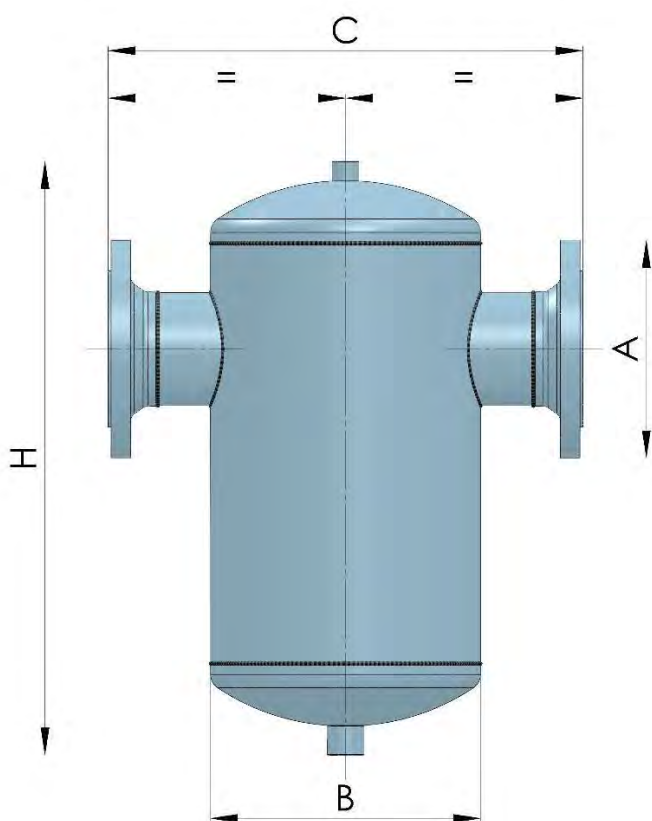
Max working pressure 10 Bar.

Air vent connection ½", discharge connection 1",

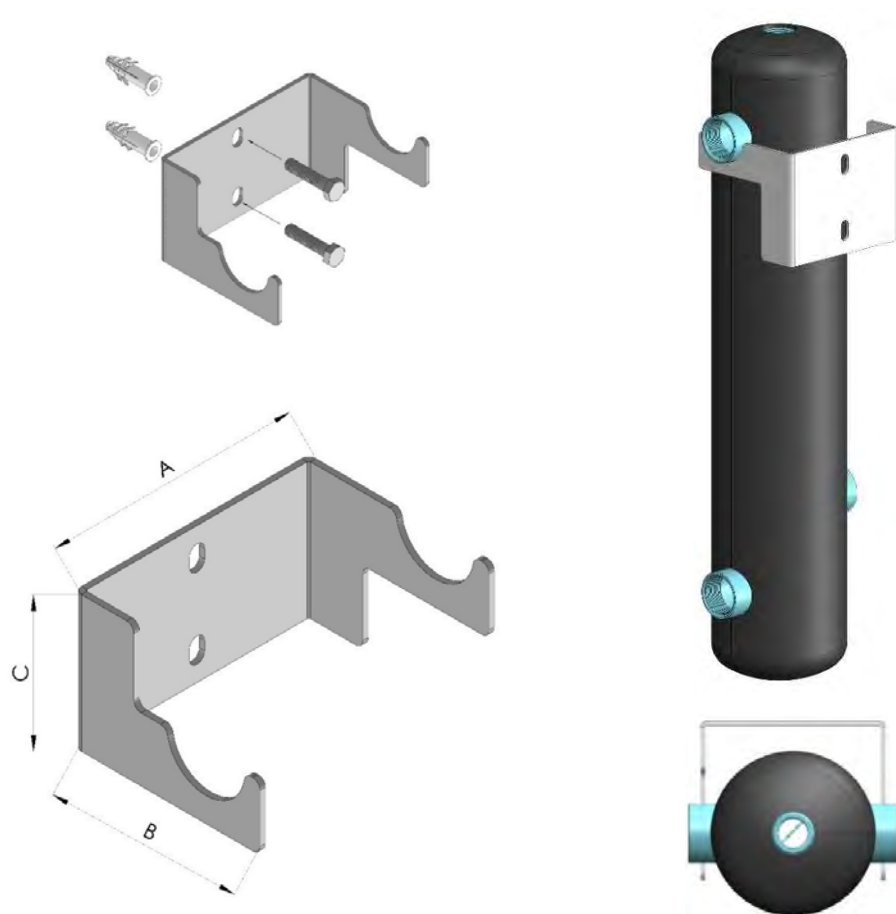
Breaking flow grid to separate air and dust from water.

Insulation removable, in PPE foamed polyurethane rigid closed-cell.

Thickness 15mm, maximum temperature before softening 90°C.



CODE	SIZE OF CONNECTIONS A	SIZE OF MAIN TUBE B	DISTANCE C	LENGTH H	MAX FLOW RATE m³/h (±0.5)	WEIGHT Kg	VOLUME Liter
6940	DN50	5" (139.7mm)	300	400	10.3	9.50	5
6941	DN65	6" (168.3mm)	350	435	17.4	12.50	7.8
6942	DN80	8" (219.1mm)	460	535	24.4	18.50	17
6943	DN100	10" (273.0mm)	480	600	41.3	24.50	30.4
6944	DN125	12" (323.9mm)	560	700	60.8	34.00	50.2
6945	DN150	14" (355.6mm)	620	800	90.7	47.00	70.2

BRACKETS FOR HYDRAULIC SEPARATORS ZINC PLATED STEEL


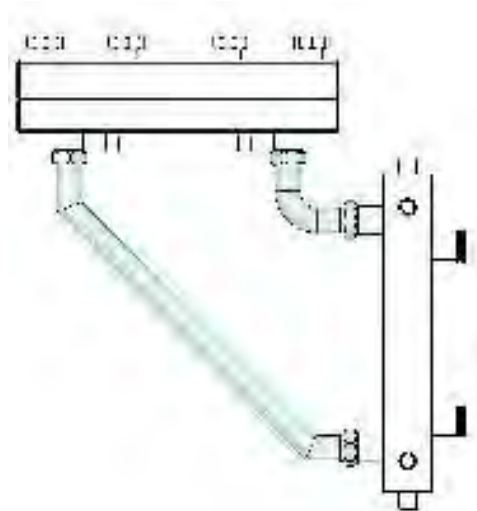
CODE	HYDRAULIC SEPARATOR CODE	A mm	B mm	C mm
F2482	6910	130	103	75
F2483	6911	150	118	75
F2484	6912	170	148	75
F2481	6913	120	103	92
F2485	6913A	135	113	97
F2486	6913B	160	128	102
F2487	6913C	185	148	112
F2499	6913M	115	110	75
F2505	6913MA	130	118	75
F2500	6913MB	155	130	90
F2501	6913MC	185	156	90

REDUCTIONS ZINC PLATED STEEL



CODE	DINEMSION
F2593	1”M-1”1/4M
F1113	1”M-1”1/2M
F2594	1”1/4M-1”1/2M
F2600	2”M-2”M

CONNECTION TUBE ZINC PLATED STEEL

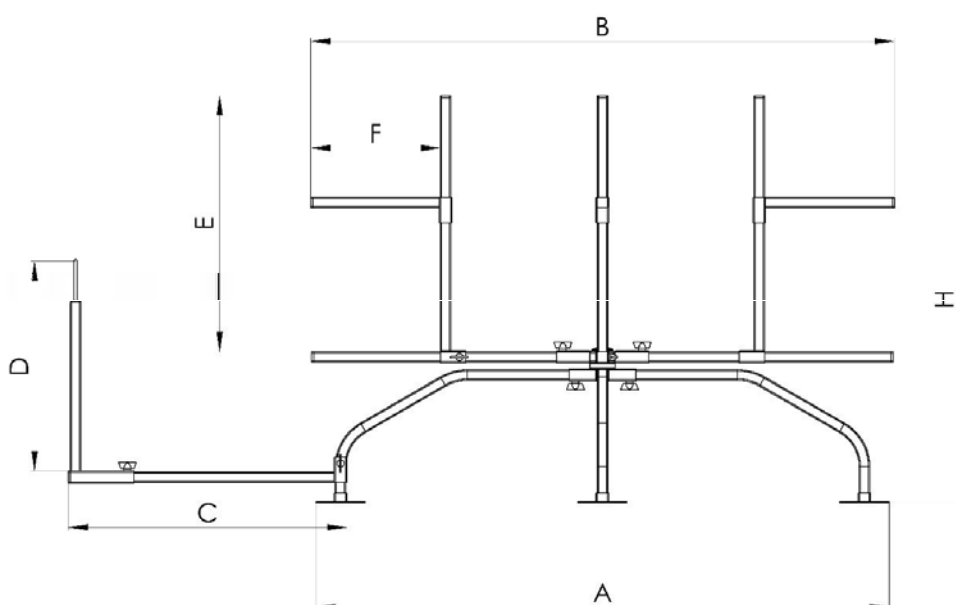


CODE	DINEMSION
C3258	Tube short connection 6910 to 6920
C3259	Tube long connection 6910 to 6920
C3260	Tube short connection 6911 to 6921 and 6912 to 6922
C3261	Tube long connection 6911 to 6921

HORSE SCROLLER ZINC PLATED STEEL

Hose scroller for tube spool for floor heating plant.
 Made with metal tube yellow galvanized FE360, Easy and fast to assemble and disassemble.
 Out he tube spool on the slide plane and center it with the provided slide guide.
 The tube can be scrolled easily thank to a support system with a capacity load 110 kg. Vertical movement guide help the tube to not go out from the slide plane.

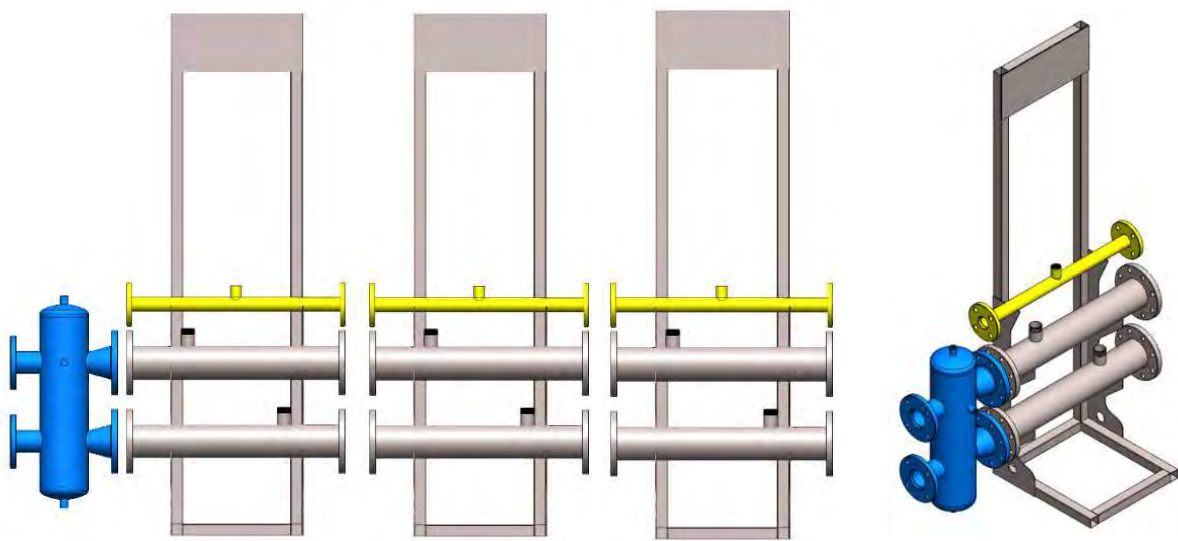
The hose scroller could be supplied in a wood box art.8301 with double handles and wheels to move it easily during the transport.



DINEMSION		mm
A	Ground supporting base width on 4 points	1030
B	Width scroll plane	1210
E	Height of internal tube spool support	600
H	Max height	900
D	Height of exit ring	500
F	Width of vertical movement guide	300
C	Width of exit ring support	600

SPECIALIST ON MANUFACTURE MANIFOLDS FOLLOWING THE CUSTOMER'S NEEDS.

Stand and Manifolds for in line Boilers



Manifolds for Gas and Water meters

